



## INTEGRATED CARE FOR CLEAN AIR

Poor air quality in the UK is an increasing health concern and is adding to the burden on the NHS.

People of the North East currently have the poorest health in England with significant levels of health inequalities. Consequently, the North East also has more attributable deaths to air pollution per 100,000 people than London, despite London having considerably worse pollution.

Newcastle Hospitals, Global Action Plan and Boehringer Ingelheim have come together to drive forward the development of the Integrated Care for Cleaner Air initiative. With the ambition to demonstrate how air pollution can be tackled at an Integrated Care System (ICS) level by providing relevant sustainability and healthcare leaders with an Integrated Care Clean Air Framework for change.

Watch the video for more information <https://www.youtube.com/watch?v=wXdv-vdDoMc> or visit [actionforcleanair.org.uk](http://actionforcleanair.org.uk)

**In this issue:**

**Clean Air**

**Waste Update**

**Survey results**

**Support for departments**

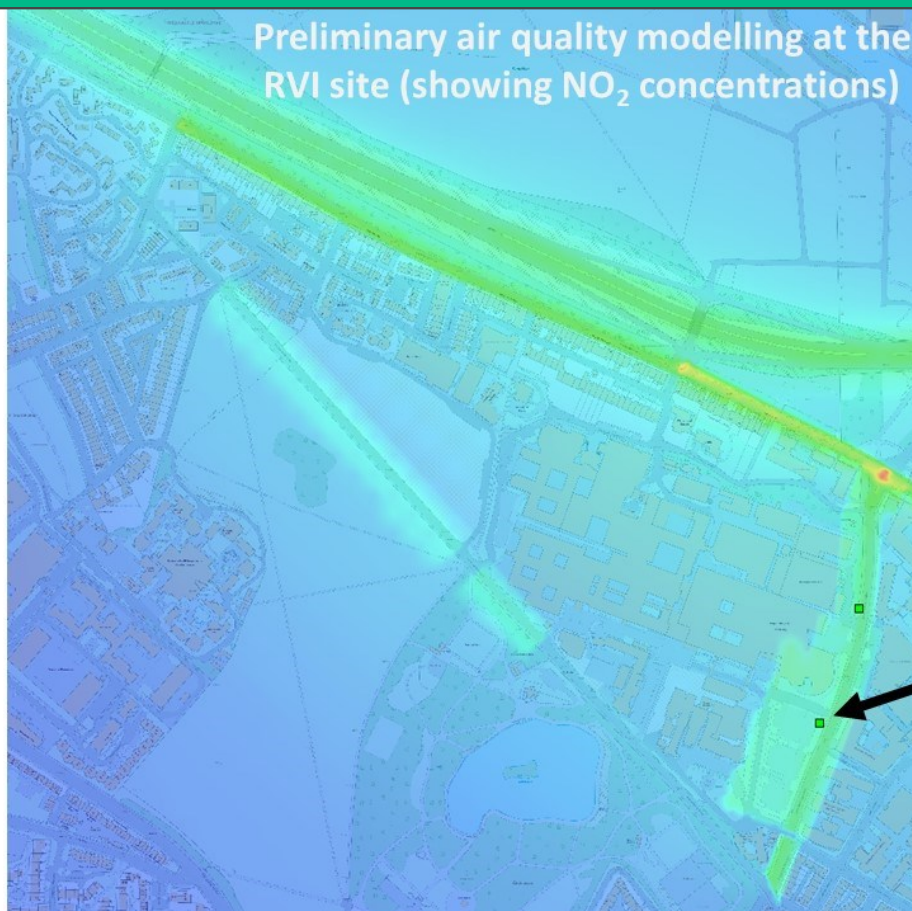
**... & more**

# AIR QUALITY

The eagle-eyed among you may have noticed some new air quality monitoring kit installed in the grounds of the RVI recently. You can see its location on the image below. The data collected will be used in part to measure the impact as we implement the actions within the Clean Air Hospital Framework. This is a self-assessment tool designed to improve air quality across the hospital site, and we have committed to achieving a rating of 'excellent' by 2025.

We've partnered with Northumbria University to offer a PhD on 'Sustainable approaches to reducing air pollution and carbon emissions in urban hospital environments'. The aim of the project is to study how an integrated net-zero carbon and clean air strategy can improve ambient and indoor air quality at major urban hospital sites. A key component of the strategy will be the application of the Clean Air Hospital Framework methodology to influence changes in policy and practice in relation to energy use, procurement, transportation, and estates management.

Two applicants were interviewed earlier this week, and we are hopeful of a successful candidate beginning this project in October!



From traffic flow and meteorology, we can predict air pollutant concentrations across the hospital site. We can also compare the predicted concentrations with concentrations measured at the RVI monitoring station.

**RVI air quality monitoring station**



# WASTE UPDATE

Over the coming weeks and months many wards will start to see their grey S14 Sharpsmart boxes replaced with this brighter green version.

The intention behind this is not only to refresh the stock of containers that are used to contain **single use metal instruments** used on wards but also to act as a striking visual reminder to all staff that we are able to capture and recycle these valuable metal items.

This introduction complements the introduction earlier this year of the larger MR64 boxes into our theatres for the capturing and recycling of larger metal instruments and guide wires.

Already this year we have sent 1 tonne of this material for decontamination, sterilisation and recycling.

Remember these are not just for scissors. Any **non-sharp** single use metal instruments can be disposed into these boxes. Larger containers, 64L in size, can also be provided if your unit produces a lot of e.g. guide wires or larger items.

Please feel free to contact waste management (21543) to discuss this initiative.



## Waste Management Training

If you work in a clinical area, please take the time to visit the waste and recycling pages of the intranet [Intranet > Support Services > Sustainability > Waste and Recycling](#).

You will find a 20 minute video to improve understanding of healthcare waste streams and improve waste segregation across the trust. [Waste Segregation at Newcastle Hospitals - YouTube](#) and information for local staff induction packs for wards and other clinical departments that can be used as refresher training.

As you are all aware, making sure things are disposed of correctly is important for compliance, is better for the environment and saves money. It will also help you in preparation for the three-yearly waste audits of clinical areas, during which knowledge and understanding of disposal of all types of clinical waste will be assessed.

For example:

1. How would you dispose of a sharp?
2. You are treating a patient in a bed bay and suspect that infection may be present. a. How would you dispose of their soft clinical waste? b. What would you do with any waste generated prior to this assessment and already disposed inside a tiger bag?
3. How would you dispose of a medicinally contaminated giving set?
4. How would you dispose of drugs packaging?
5. How would you dispose of a saline bag without any medicine added?



# SUSTAINABILITY SURVEY

Almost 2,000 people responded to our annual sustainability survey last year, which is excellent!

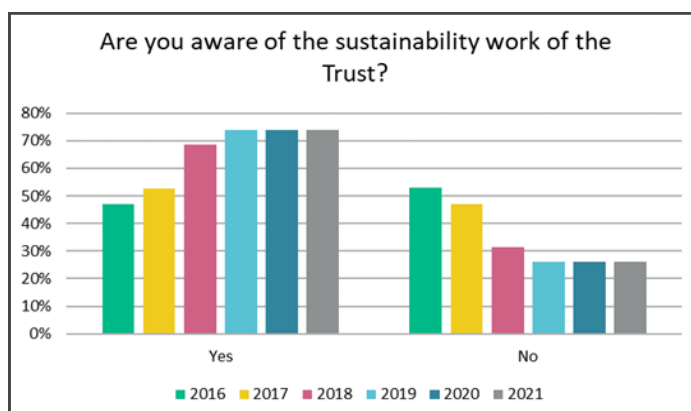
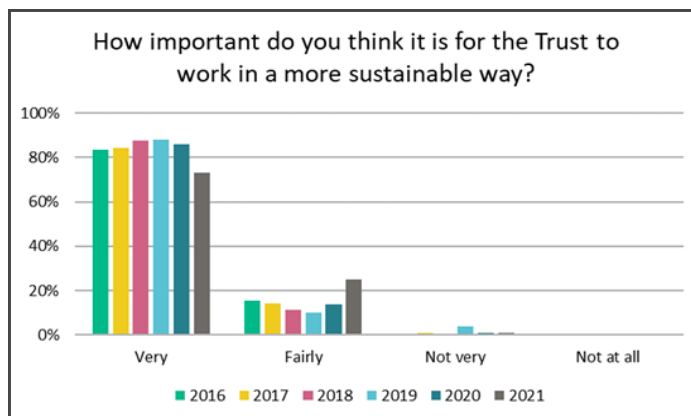
Over the last eight years we have been carrying out an annual staff sustainability survey to gain insight into your opinions and understanding of sustainability.

In recent years, despite huge challenges in the NHS, 99% of our staff believe that it is important for us to work in a more sustainable way.

To assess the effectiveness of our communication and engagement work, we also ask you if you are aware of the sustainability work of the Trust. Since the launch of our Shine brand in 2016 this increased year-on-year up to 74% of staff in 2019, a rate that has remained consistent since then.

We also asked you for your views on sustainability and we have woven this feedback throughout this year's annual sustainability report to demonstrate how you are feeling about the Climate Emergency and our response to it.

The report is due to be published by the end of July, and of course, as Green Champions you will be among the first to read it. **This year's report is our Red Flag issue, as we are raising serious concerns about the rate of progress being made in**



*"I would like to hear more about the bigger actions which presumably must be happening behind the scenes, e.g. sustainable energy sources."*

*"Better public transport for patients to attend clinic appointments. There is still priority given to car drivers and no incentive for staff members to take public transport/ car share if they only have to pay £2 a day for parking. Car drivers get rewarded by driving in (cheap parking) whilst people who walk or cycle have to suffer the car fumes."*

*"I find the consumption of PPE related plastics and wipes really upsetting."*

*"More needs to be done about stores of equipment etc, and a tighter hold on having less waste due to poor training on ordering of goods... It's criminal the amount of waste that goes on in the NHS."*

*"There appears to be a lot of "speaking" but not a lot of action. We don't have clinical staff actively engaged. I am aware of an anaesthetic fellow, but why aren't we looking at engaging clinical staff, such as specialist nurses into roles that will directly influence clinical practice?"*

*"Investment into a sustainable estate and sustainable procurement needs to be of prime importance. Funding required to enable the Estates Department to reduce carbon footprint and be a leader amongst other NHS institutions."*

*"Clinical staff need protected time to commit to projects or to know who the enablers are to help them, in similar way to improvement facilitators from Newcastle Improvement. That will require investment into new SusQI facilitator roles or merged roles with Newcastle Improvement."*

**light of the climate emergency we face.**

Your comments and feedback provided valuable insight into the concerns you have, many of which we share in the sustainability team.

As a result of the findings in this year's report we are doing two new things.

Firstly, we have taken notice of the red flags and have given a new mandate to our Executive Oversight Group for Climate Emergency to address these concerns with renewed urgency.

Secondly, we are calling for more support to address the systemic barriers to change identified throughout this report, without which it will be impossible to reach our goals of Zero Carbon, Zero Waste and Clean Air.

Some of your feedback is highlighted here.

# EMBEDDING SUSTAINABILITY

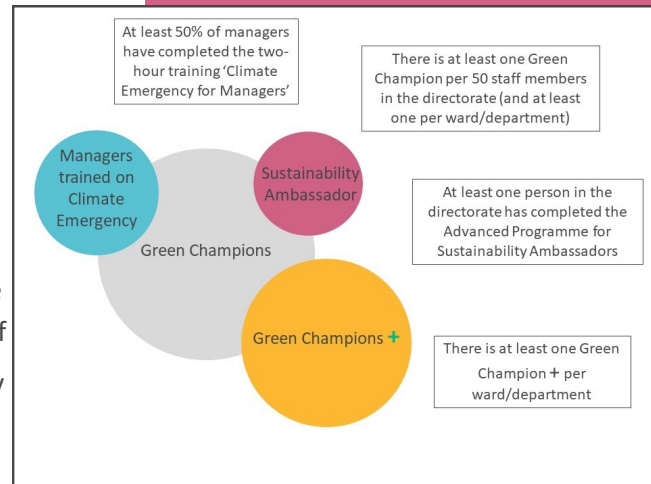
There is support available from the sustainability team to help embed sustainability throughout a directorate or department, with a 10 step programme in line with the [Model for Sustainability—What Good Looks Like](#).

So far, nine departments have engaged with the sustainability team through the programme and have started on their journey.

The steps are: appoint a named person responsible for sustainability; build a relationship with sustainability team; add sustainability to the agenda of key meetings; produce a sustainability statement; increase awareness through training (see model in picture); build a network of Green Champions +; establish a sustainability working group, identify and record the main sustainability impacts; create an action plan and monitor progress; report progress & share success stories.

It isn't necessary to do all the steps in order, and the sustainability team will offer support at each stage.

If you would like to implement this in your department, we can also support you to speak to your head of department or directorate manager to get started. Just drop us an email at

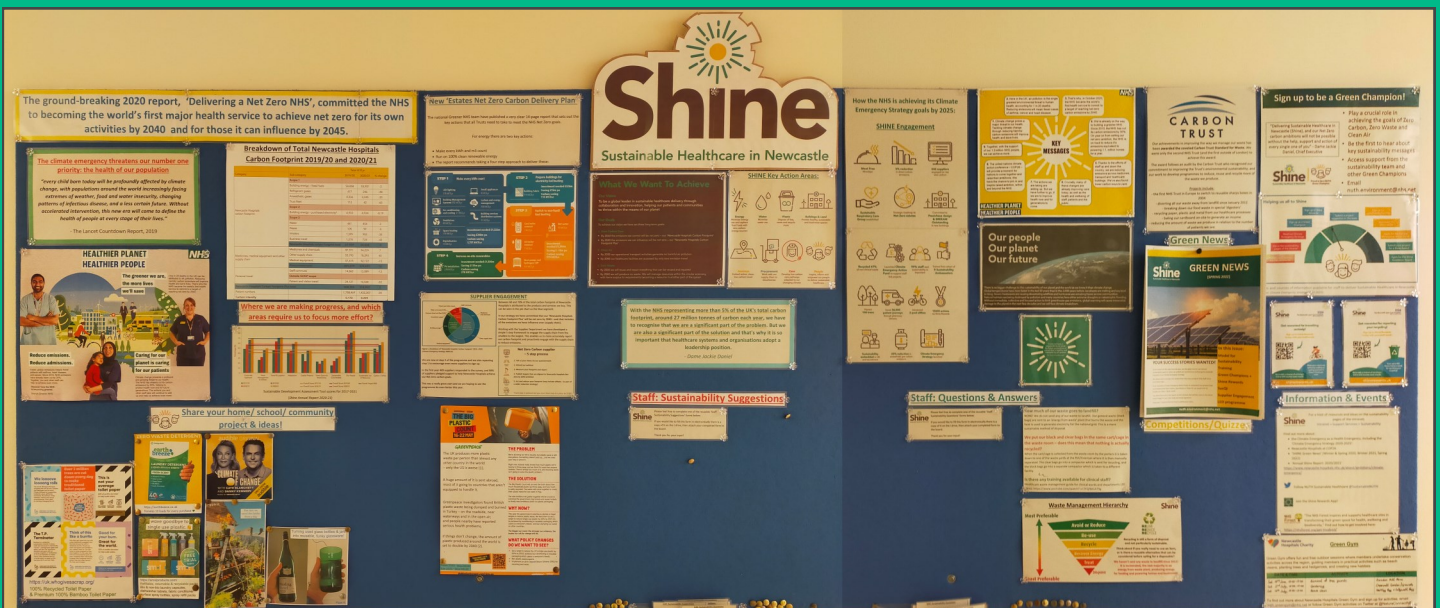


[nuth.environment@nhs.net](mailto:nuth.environment@nhs.net) for an informal chat with one of the team.

We now have 20 Green Champions + from various departments. The third quarterly meeting (which incorporates a bitesize training session) will be on the 20th July, The role is open to anyone who is interested in taking on a bit more responsibility as a Green Champion, and does require line manager approval.

One Directorate embarking on the 10 step programme is Integrated Laboratory Medicine and as a great kick-off project Cam Abbott has produced this amazing sustainability notice board!

We think this is really excellent, and a great way to keep staff up to date with what is going on across the departments.



# GREENER NHS & DAME JACKIE AT NHS CONFED EXPO

Greener NHS were able to announce that all NHS Trusts now have a Green Plan in place, at NHS Confed Expo on 16th June! This means every Trust now has a plan which will outline how they will reach the NHS goal of Net Zero by 2045 for emissions they control and influence.

Here at Newcastle our Green Plan is our Climate Emergency Strategy. This can be downloaded and read [here](#).

During the session 'Achieving the NHS' ambitions to become carbon net zero – what will it take?', Dame Jackie Daniel spoke about the need to fast track decarbonisation, and the need to cut emissions now to limit global temperature increases.

She also stressed that progress on decarbonising NHS estates will only come with sustained national investment and focus.

We will also be echoing these sentiments in our upcoming annual sustainability report—our red flag issue—which will be published by the end of July.

## WINNERS

You may remember completing our annual sustainability survey. As part of that survey we included a prize draw and we are happy to announce the 5 winners who will all be receiving Love 2 Shop vouchers.

They are:

Ruth Latter

Suzanne Holland

Joanne Campbell

Deborah Mawson

And

Deepa Varghese!!

Congratulations!!!



## NEW WEBPAGES COMING SOON!

We know that a lot of you would appreciate regular updates about the progress being made towards the goals of Net Zero Carbon, Clean Air and Zero Waste, as well as a better understanding of what our plans are in the short, medium and long term. We also want to be able to host case studies, and newsletters in a place that is accessible to those stakeholders outside our organisation such as service users, people in the local community, other healthcare organisations and our suppliers.

To try and do some of those things identified and improve our engagement across all stakeholder groups we will be launching some new pages as part of a refreshed Flourish website. They will feature progress, plans, case studies, news, training, and ways to get involved whether you are a member of staff, a member of the public or part of our supply chain,

Of course, as Green Champions you will be among the first to find out when these are ready, and to take a look!